

Easystore Tailor-made storage solutions – the right choice for everyone.

Easystore locker systems by WINTERSTEIGER make an impression with state-of-the-art design, maximum flexibility and stability, and maximum storage capacity on a minimal footprint. Customized features allow you to choose your own colors, logos, visuals and labeling to customize the locker design.

Thanks to our partnership with Steurer Systems, our range of rental, depot, and drying systems has become even more versatile. We plan storage lockers individually based on your requirements, taking maximum space utilization, drying, and disinfection into account, while at the same time catering to your system needs.

Our Easyrent rental, storage and POS software makes storage management unbelievably fast and easy. It also features a simple module for managing and lock control for the Easystore locker systems.

Benefit from our experience. WINTERSTEIGER supports you from the planning phase all the way to implementation of your perfect storage facility.



Contents:

From planning to implementation	4
Drying variations	6
Product lines	8
Ski and boot storage lockers	10
Locking systems	14
Benches	15
Colors and decors	16

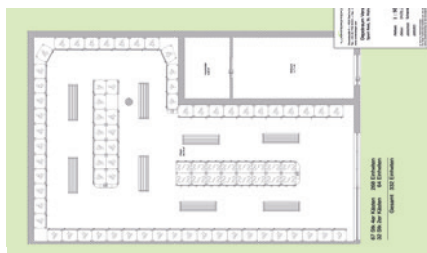
From planning to implementation. Benefit from our experience.

Planning.

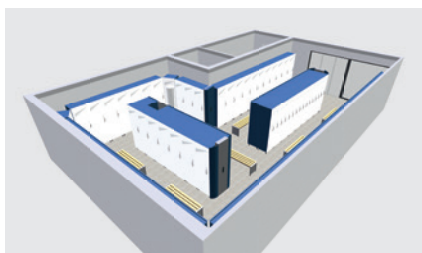
Let WINTERSTEIGER help you plan your ski rental or storage facility. In cooperation with our partner

Steurer Systems, we can provide you with expert advice to assist you in the design and layout of your location.

Thanks to many years of combined experience, we can guarantee an efficient, profitable solution to your business.



2D planning



3D planning



Implementation

Locker systems.

No matter whether you operate a storage or rental business, lift station, hotel, chalet or holiday home, we have the perfect solution for you. Our locker systems can be customized to meet your requirements, the size of your operation, and your customers needs.

WINTERSTEIGER offers a large variety of components to help you operate your storage business in a professional manner: Lockable storage racks, drying and heating units and deodorization can all be customized to match your needs. Visiting guests are always looking for a convenient option to store

their ski and snowboard equipment. Allowing them to enjoy the day on the slopes, and then hand over their skis or snowboards to enjoy après-ski activities or return to their hotels. This makes the holiday even more enjoyable for all guests.



Extra variants for greater flexibility.

 Quality – Made in Austria

- Balanced, harmonious range of ski lockers, from the base model (C Line) to the premium version (S Line)
- The ski/boot storage lockers are available in a number of different sizes and with a broad selection of optional equipment.
- Needs-based and flexible. We are particularly adept at providing customer-specific solutions and products for special applications.
- We exclusively use sendzimized high-quality thin-gage sheet metal from Austria (VOEST). In combination with a powder coating, we ensure the highest levels of corrosion protection. All doors are extremely robust (special hinges) and are fitted with an opening restrictor.
- Depending on the customer's individual needs or preferences, we can supply lockers with either a proven perforated base system with special rubber mat or an integrated floor pan with practical drain nozzle. With this variant, wastewater is removed by a wet vacuum cleaner – drainage is not necessary.
- In terms of the locker roof, we offer both a slanted roof or a cubic roof (necessary with xDry and hybridDry versions as well as online locking systems).
- Order your locker with scratch protection pads or a special scratch-resistant powder coating with 3D appearance – everything is possible
- All ski/boot storage lockers are fitted with innovative, extremely robust drying arms made from anodized aluminum with unique speedDry blow-out end caps from Steurer.



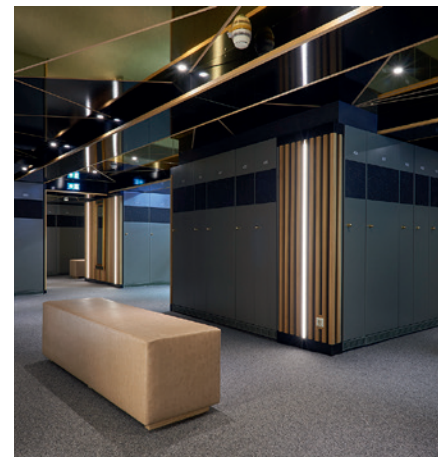
Standard doors

- Solid, single-skinned doors
- Different versions
- Hot-dip galvanized, powder coated
- Optionally available with embossed logo



Sandwich doors

- Double-skinned, highly robust sandwich construction
- High-quality haptics (comparable to solid wood)
- Hot-dip galvanized, powder coated



Alternative surfaces and materials

- For example: Stainless steel

Drying variants.

xDry

The xDry system operates according to a recirculation drying principle via a high-quality radial blower, which is built into the roof of the ski storage locker. xDry is low maintenance, quiet, and highly energy-efficient.

hybridDry

The best recirculation and thermal drying combination in one. Ideally, a drying cycle is started with the xDry system in the second half of the night. The thermal drying system can then be switched on separately in the early morning, so that your guests can start their day with equipment that is both warm and dry.

Locking systems.

From mechanical (cylinder, quarter-turn, deposit, and non-return locks) to electronic locking systems (numeric code lock, offline and online locking systems), everything is possible.

Decentralized online locking system.

Use of state-of-the-art, 100,000 times proven, online controlled electronic locking systems from the market leader

Gantner Technologies (Schrans, Austria). Every locker is fitted with a reader, so that your guests can open and close their lockers with a suitable card (such as a ski pass). This has the advantage of preventing queues at peak times in the morning and afternoon. There is also a built-in interface to the latest rental software packages.



Gantner online lock



PIN-Code lock



Intuitive helmet holder with drying function



Robust doors with special hinges including opening restrictor. Scratch protection pads optional



Options – e.g., mirror, utility nets, hooks



Large range of locking systems



xDry drying system



New, extremely robust, oval drying arms made from anodized aluminum tubes for ski boots and/or gloves



Locker base with water drainage tray and a siphon per ski locker with built-in pipework – cleaning function optional



Product lines.

S Line

The premium solution.



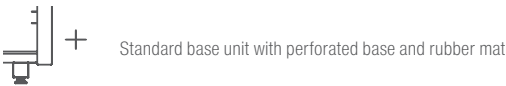
S-Compact Linie

The premium solution for low ceilings.

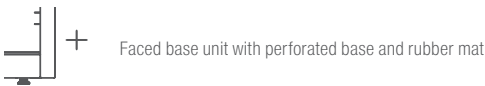


Technical data		
Storage		
Types	S2_300, S2_350, S2+1_350, S3_450 S4_600, S4_700	
Dimensions (H x D)	2300 x 560 mm	
Drying systems	xDry, hybridDry	
Doors	Standard doors Sandwich doors Alternative door surfaces	
Locking systems		
Roof		
Base		
Power	xDry	hybridDry
S2_300	30 W	67 W / 76 W*
S2_350	30 W	67 W / 76 W*
S2+1_350	30 W	76 W / 90 W*
S3_450	30 W	104 W / 118 W*
S4_600	30 W	104 W / 122 W*
S4_700	30 W	104 W / 122 W*

Technical data		
Storage		
Types	S2_350_compact, S3_500_compact, S4_700_compact	
Dimensions (H x D)	2050 x 560 mm	
Drying systems	xDry, hybridDry	
Doors	Standard doors Sandwich doors Alternative door surfaces	
Locking systems		
Roof		
Base		
Power	xDry	hybridDry
S2_350_compact	30 W	67 W
S3_500_compact	30 W	92 W
S4_700_compact	30 W	104 W



Standard base unit with perforated base and rubber mat



Faced base unit with perforated base and rubber mat

*glove drying included

C Line

The standard solution.



E Line

The combi solution.



D Line

Locker systems.



Technical data

Storage	
Types	C2_300 C5_600
Dimensions (H x D)	2200 x 560 mm
Drying systems	xDry, hybridDry
Doors	Standard doors Sandwich doors Alternative door surfaces
Locking systems	
Roof	
Base	

Power	xDry	hybridDry
C2_300	30 W	67 W
C5_600	30 W	118 W

Technical data

Storage	
Types	E2_600
Dimensions (H x D)	2200 x 560 mm
Drying systems	xDry, hybridDry
Doors	Standard doors Sandwich doors Alternative door surfaces
Locking systems	
Roof	
Base	

Power	xDry	hybridDry
E2_600	30 W	67 W

Technical data

Storage	
Types	D2_350, D3_350, D4_350
Dimensions (H x D)	2200 x 560 mm
Drying systems	–
Doors	Standard doors Sandwich doors Alternative door surfaces
Locking systems	
Roof	
Base	

Power	xDry	hybridDry
D2_350	–	–
D3_350	–	–
D4_350	–	–



Faced base unit with integrated floor pan and drain nozzle

S Line

Storage locker..

The premium solution.


The ski storage lockers in the S Line range offer plenty of space for skis, poles, and boots. The unique and intuitive helmet holder ensures that helmets are thoroughly dried. Glove drying optional. The base is perforated as standard and is fitted with a special high-quality, water-permeable

rubber lining. An integrated floor pan with practical drain nozzle can be selected as an option. With this variant, wastewater is removed by a wet vacuum cleaner – drainage is not necessary.

S2_300

The premium solution / 2 people.

Technical data


Storage	
Dimensions (W x H x D)	300 x 2300 x 560 mm
Connected load	xDry: 30 W, hybridDry: 67 W / 76 W*
Ski boots	2 pairs
Skis / poles	2 pairs
Helmets	2



S2_350

The premium solution / 2 people.

Technical data

Storage	
Dimensions (W x H x D)	350 x 2300 x 560 mm
Connected load	xDry: 30 W, hybridDry: 67 W / 76 W*
Ski boots	2 pairs
Skis / poles	2 pairs
Helmets	2



S2+1_350

The family solution / 3 people.

Technical data

Storage	
Dimensions (W x H x D)	350 x 2300 x 560 mm
Connected load	xDry: 30 W, hybridDry: 76 W / 90 W*
Ski boots	3 pairs
Skis / poles	3 pairs
Helmets	3




*glove drying included

S3_450

The premium family solution / 3 people.

Technical data


Storage	
Dimensions (W x H x D)	450 x 2300 x 560 mm
Connected load	xDry: 30 W, hybridDry: 104 W / 118 W*
Ski boots	3 pairs
Skis / poles	3 pairs
Helmets	3



S4_600

The premium family solution / 4 people.

Technical data


Storage	
Dimensions (W x H x D)	600 x 2300 x 560 mm
Connected load	xDry: 30 W, hybridDry: 104 W / 122 W*
Ski boots	4 pairs
Skis / poles	4 pairs
Helmets	4



S4_700

The superior family solution / 4 people.

Technical data

Storage	
Dimensions (W x H x D)	700 x 2300 x 560 mm
Connected load	xDry: 30 W, hybridDry: 104 W / 122 W*
Ski boots	4 pairs
Skis / poles	4 pairs
Helmets	4



S-Compact line

Storage locker.

The premium solution for low ceilings.


The ski storage lockers in the S-compact line offer plenty of space for skis, poles, and ski boots. The unique and intuitive helmet holder ensures that helmets are thoroughly

dried. The base is fitted with an integrated water drainage system as standard. The wastewater is removed by a wet vacuum cleaner – drainage is not necessary.

S2_350_Compact

The premium solution for low ceilings / 2 people.

Technical data


Storage	
Dimensions (W x H x D)	350 x 2050 x 560 mm
Connected load	xDry: 30 W, hybridDry: 67 W
Ski boots	2 pairs
Ski / poles	2 pairs
Helmets	2



S3_500_Compact

The premium solution for low ceilings / 3 people.

Technical data


Storage	
Dimensions (W x H x D)	500 x 2050 x 560 mm
Connected load	xDry: 30 W, hybridDry: 92 W
Ski boots	3 pairs
Ski / poles	3 pairs
Helmets	3



S4_700_Compact

The premium solution for low ceilings / 4 people.

Technical data

Storage	
Dimensions (W x H x D)	700 x 2050 x 560 mm
Connected load	xDry: 30 W, hybridDry: 104 W
Ski boots	4 pairs
Ski / poles	4 pairs
Helmets	4



C Line

Storage locker.

The standard solution.

The ski storage lockers in the C Line range offer plenty of space for skis, poles, and boots, and are fitted with helmet hooks. The base is perforated as standard and is fitted with a special water-permeable rubber lining. An integrated floor pan with practical drain nozzle can be selected as an option. With this variant, wastewater is removed by a wet vacuum cleaner – drainage is not necessary.

C2_300

The standard solution / 2 people.

Technical data


Storage	
Dimensions (W x H x D)	300 x 2200 x 560 mm
Connected load	xDry: 30 W, hybridDry: 67 W
Ski boots	2 pairs
Skis / poles	2 pairs



C5_600

The standard solution / 5 people.

Technical data

Storage	
Dimensions (W x H x D)	600 x 2200 x 560 mm
Connected load	xDry: 30 W, hybridDry: 118 W
Ski boots	5 pairs
Skis / poles	5 pairs



E Line

Combi storage locker.


The combi solution.

As a combination locker, the E2 ski storage locker offers even more space for ski equipment. In addition to the standard features of a conventional ski locker, this locker type is fitted with a clothes compartment to provide ample space for helmet, gloves, protectors, and more. Adjustable trays in the clothing compartment and a built in clothing rail means that this solution can be assembled quickly and easily. The base is perforated as a standard and is fitted with a special water-permeable rubber lining. An integrated floor pan with practical drain nozzle can be selected as an option. With this variant, wastewater is removed by a wet vacuum cleaner – drainage is not necessary.

E2_600

The combi solution / 2 people.

Technical data

Storage	
Dimensions (W x H x D)	600 x 2200 x 560 mm
Connected load	xDry: 30 W, hybridDry: 67 W
Ski boots	2 pairs
Skis / poles	2 pairs
Helmets	2




D Line

Locker systems.

You can trust the locker systems in the D Line to keep bags and valuables safe and sound. Install our locker systems at your ski resort and offer your guests even greater levels of convenience.

D2_350


Locker systems.

Technical data	
Storage	
Dimensions (W x H x D)	350 x 2200 x 560 mm



D3_350


Locker systems.

Technical data	
Storage	
Dimensions (W x H x D)	350 x 2200 x 560 mm



D4_350

Locker systems.

Technical data	
Storage	
Dimensions (W x H x D)	350 x 2200 x 560 mm



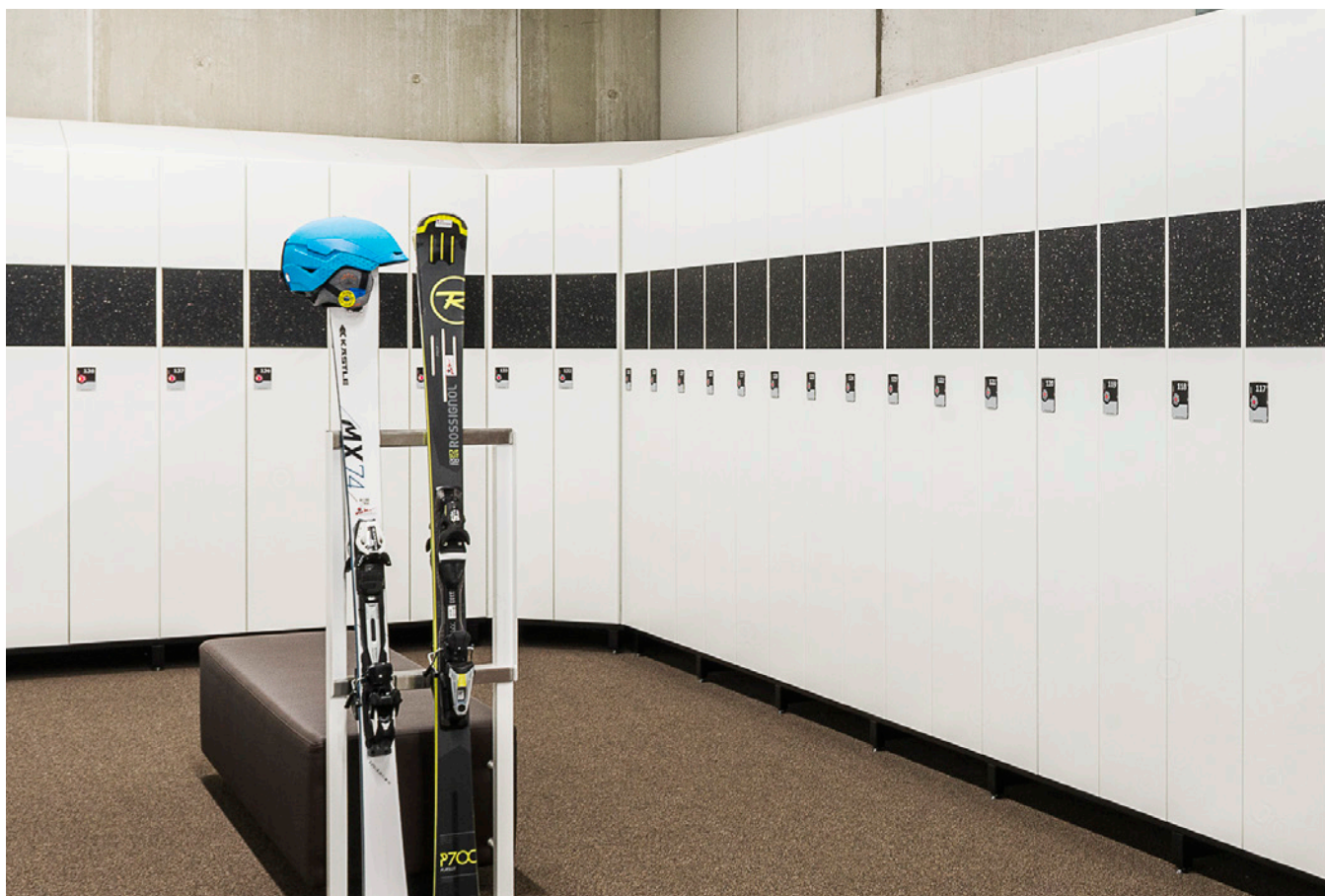
Benches

The designer bench for every taste and every need.

Shaped tubular frames belong to the past. With this designer bench, you will always be making the right choice. It impresses through its timeless yet robust design. Optionally available with a ski rest.

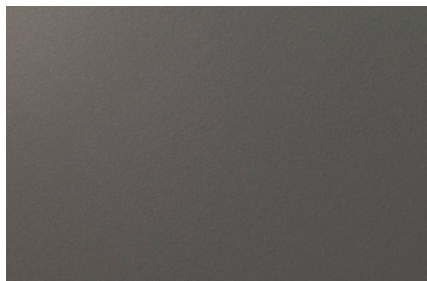
Technical data

Dimensions (W x H x D)	1000 / 1500 / 2000 x 400 x 400 mm
Frame material	Hot-dip galvanized, power-coated sheet steel
Seat material	Slatted (Finnish birch), solid wood (oiled oak), padding (fabric / artificial leather)

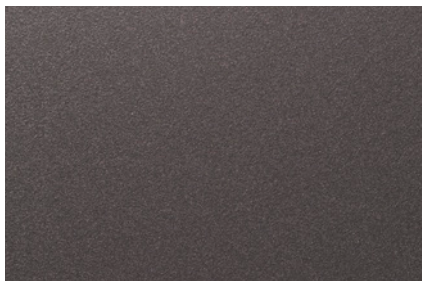


Colors and decors

Standard colours (source: Steurer GmbH)



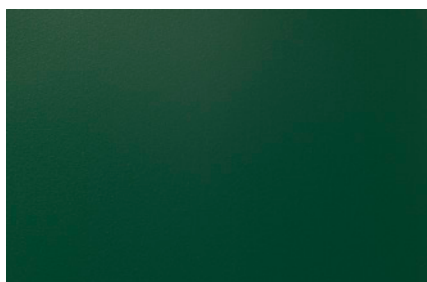
Basalt grey, RAL 7012



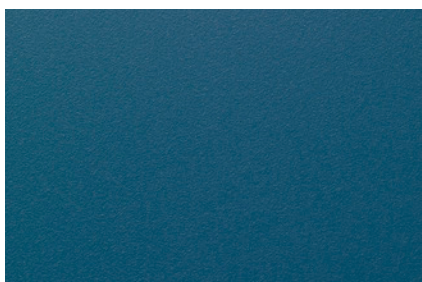
Steurer Iron grey



Steurer Carbon



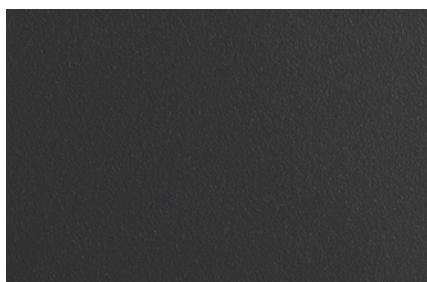
Patina green, RAL 6000



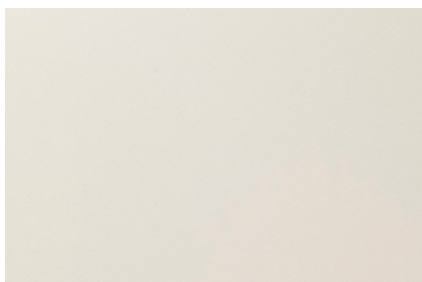
Azure blue, RAL 5009



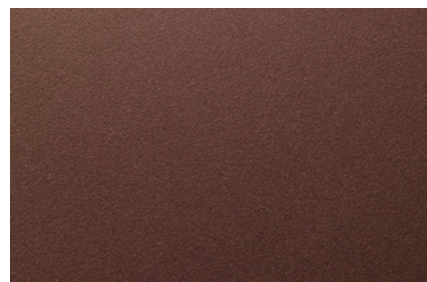
Traffic red, RAL 3020



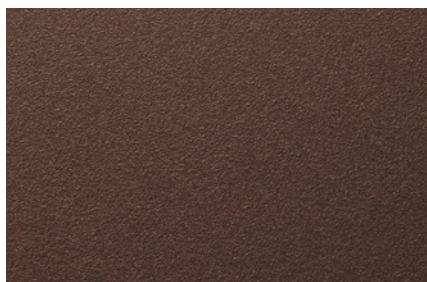
Anthracite grey, RAL 7016



Pure white, RAL 9010



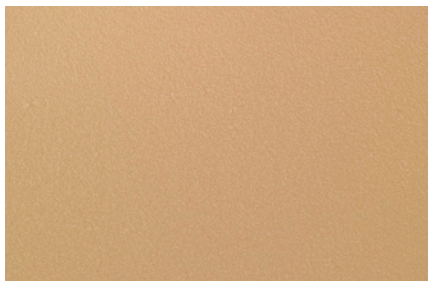
Steurer Rust Mica



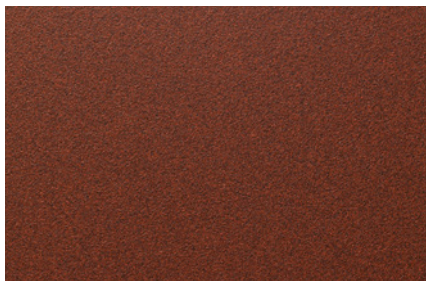
Steurer Architectural bronze

Colors and decors

Premium colours (source: Steurer GmbH)



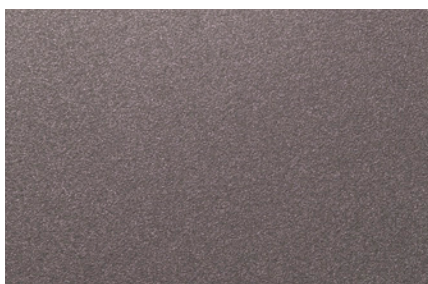
Steurer beige 3D, RAL 1001



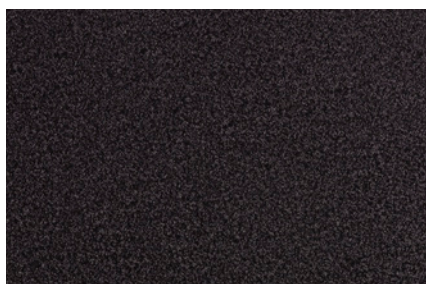
Steurer growing rust, fine



Steurer brown 3D

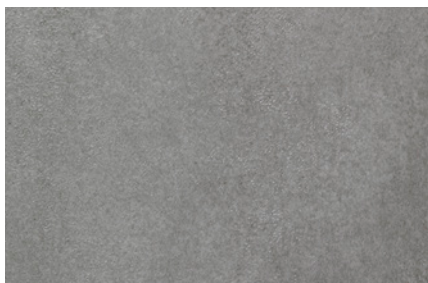


Steurer iron grey mica, fine

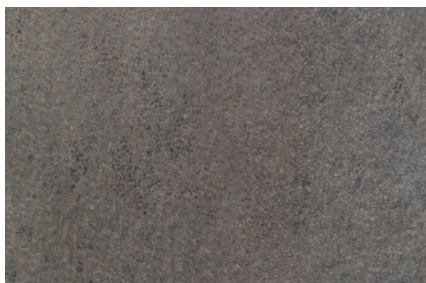


Steurer black 3D

Concrete Look (source: Steurer GmbH)

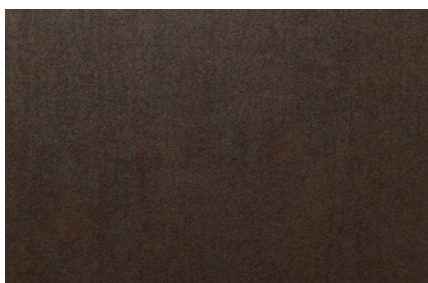


Steurer B54 B

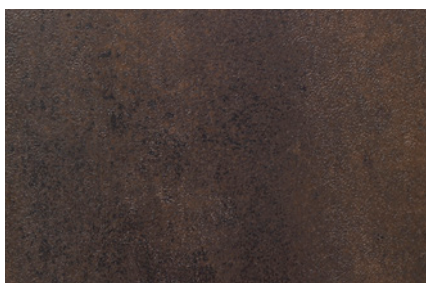


Steurer D53 D

Corrosive Metal Look (source: Steurer GmbH)



Steurer 1391



Steurer D35 C

Colors and decors

Wood Look (source: Steurer GmbH)



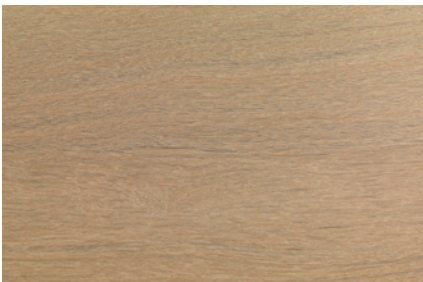
Steurer 1411



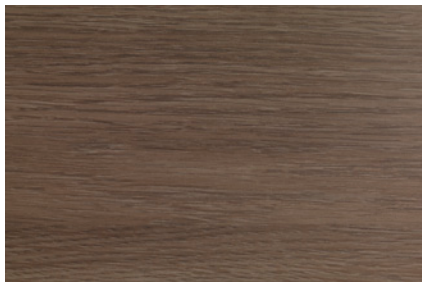
Steurer 1416



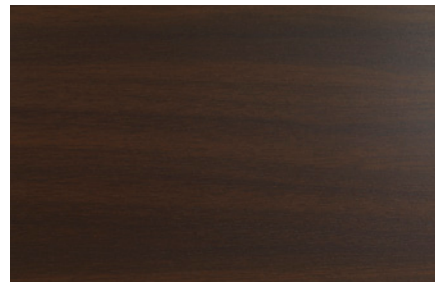
Steurer 1206



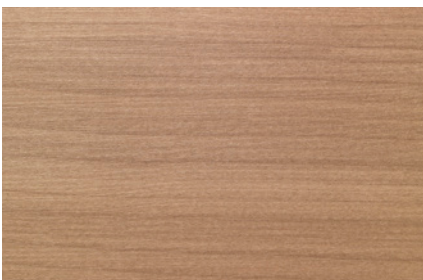
Steurer 1317



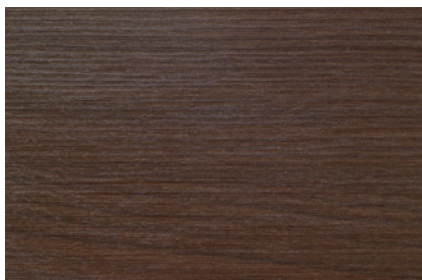
Steurer 1397



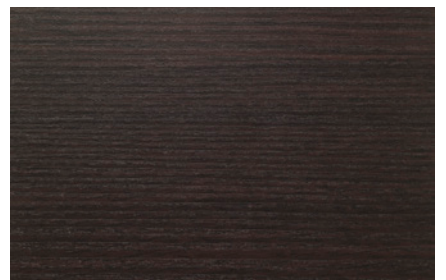
Steurer 1361



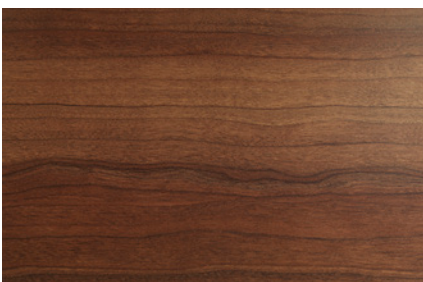
Steurer 1030



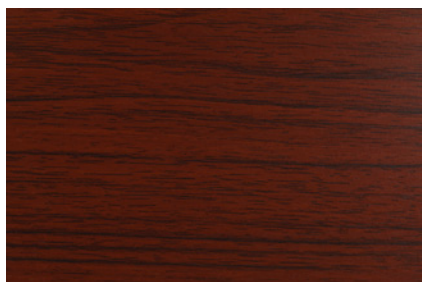
Steurer 1022



Steurer 1020



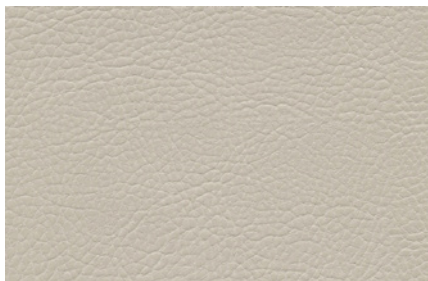
Steurer 1320



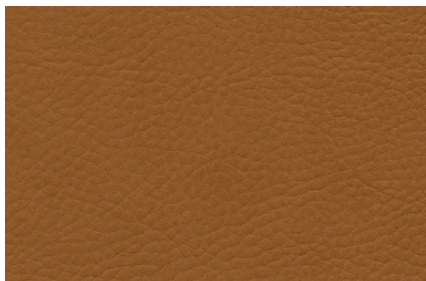
Steurer 1157

Colors and decors

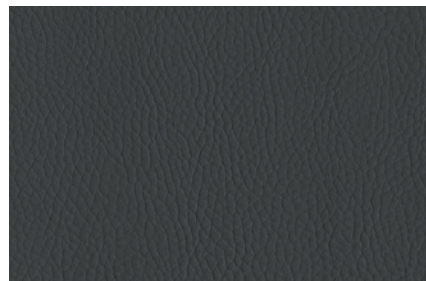
Color options, bench with faux leather cover decovin® nappa (source: Winter Creation AG)



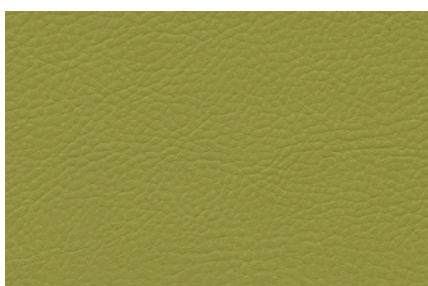
Perle, decovin® nappa



Cognac, decovin® nappa



Anthracite, decovin® nappa



Pistache, decovin® nappa

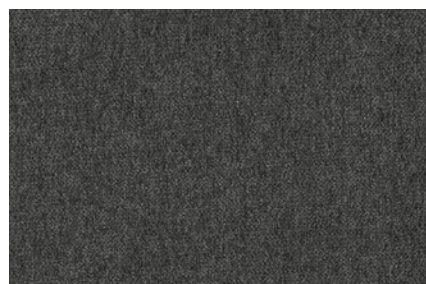
Color options, bench with textile cover microweb® chenille (source: Winter Creation AG)



Cappuccino, microweb® chenille FR



Silver, microweb® chenille FR



Anthracite, microweb® chenille FR



Pistache, microweb® chenille FR

Colors and decors

Scratch protection pad.

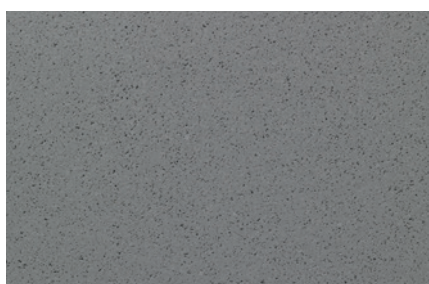
Standard (source: Steurer GmbH)



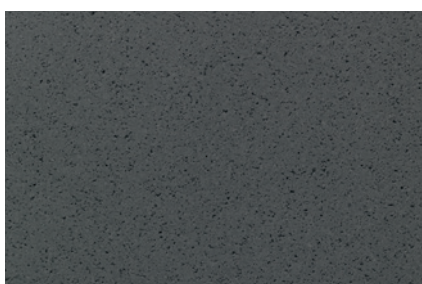
Steurer Standard



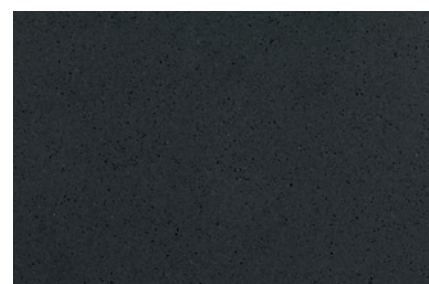
On request (source: Steurer GmbH)



Steurer Berlin



Steurer Oslo



Steurer Mons

Colors and decors

Adhesive numbers, standard.



Black



Stainless steel look



Success begins with the right decisions.
At the right time. We look forward to you!



First Class
WINTERSTEIGER
Rental & Depot Solutions

Headquarters:

Austria: WINTERSTEIGER AG, 4910 Ried, Dimmelstrasse 9,
Tel.: +43 7752 919-0, Fax: +43 7752 919-52,
sports@wintersteiger.at

For customers in Germany only: Tel.: +49 3628 66399-1970,
Fax: +49 3628 66399-1973

International Companies:

Canada: WINTERSTEIGER Inc., CDN-Laval Q.C. H7L 5A1,
964 Bergar Street, Tel.: +1 450 6637800, Fax: +1 450 6632896,
info@canada.wintersteiger.com

France: SKID-WINTERSTEIGER S.A.S.,
Parc d'Activités Alpespace - 102 voie Galilée,
73800 Ste. Hélène du Lac, Tel. : +33 479 25-1160,
Fax : +33 479 25-1161, office@skid-wintersteiger.com

Italy: WINTERSTEIGER Italia s.r.l., 39036 Badia (BZ),
Fraz. La Villa – Strada Ninz 82, Tel.: +39 0471 844 186,
Fax: +39 0471 188 1664, info@wintersteiger.it

Russia: OOO WINTERSTEIGER, Krzhizhanovsky Str. 14, Build. 3,
117218 Moscow, Russia, Tel.: +7 495 645 84 91,
Fax: +7 495 645 84 92, office@wintersteiger.ru

Switzerland: WINTERSTEIGER Schweiz AG, 6331 Hünenberg,
Chamerstrasse 44, Tel.: +41 41 780 23 22, Fax: +41 41 780 23 90,
office@wintersteiger.ch

USA: WINTERSTEIGER Inc., 4705 Amelia Earhart Drive,
Salt Lake City, UT 84116-2876, Tel.: +1 801 355-6550,
Fax: +1 801 355-6541, mailbox@wintersteiger.com

Representations:

Argentina, Australia, Benelux, Bosnia Herzegovina, Bulgaria, Chile, China, Croatia, Czech Republic, Denmark, Finland, Great Britain, Hungary, Japan, Macedonia, New Zealand, Norway, Poland, Romania, Serbia, Slovakia, Slovenia, Spain, South Korea, Sweden, Turkey. Contact details for our representatives are available on www.wintersteiger.com/sports.